



ROYAL REHEARSAL—Getting ready for the big day, British footguards and household cavalry go through the motions of Queen Elizabeth's post-coronation return parade to Buckingham Palace after being crowned. Seen above, turning into the palace, is the State landau in which Elizabeth II will ride.

Cheese, Dry Milk Exports Decline

Exports of cheese, canned milk and dried milk in 1951-52 were almost 50 per cent smaller than in the previous year.

According to W. L. Witte, chief of the marketing division in the State Department of Agriculture, exports of these products for 1951-52 totaled 334 million pounds—the lowest since the end of World War II. Cheese exports were down 55 per cent from the year before, canned milk 15 per cent, dried whole milk 22 per cent and non-fat dry milk solids more than 75 per cent.

Three major factors account for the decline in dairy exports, Witte said. The first is an increase in milk production in a number of other countries. In most countries milk production now exceeds pre-World War II levels. Other factors in the falling exports are a decline in U. S. funds for foreign relief, and a strong domestic market for milk products.

Excess Weight Impairs Health, Shortens Life

Thousands of Wisconsin residents are eating themselves into early graves. Statistical as well as common-sense, evidence clearly shows that excess weight impairs health and shortens life.

Why do they keep eating after their hunger is satisfied? Why must their appetites for more food than they need, be appeased?

We know that hunger is one of the basic human drives necessary for self-preservation. But there is a big difference between stomach contractions with accompanying hunger pains, and the underlying mental and emotional factors of appetite.

For example, racial, economic, and cultural food habits which aided survival in the past, may no longer apply, yet the habits persist. Grandfather worked hard on the farm and ate a lot, but his son sits in an office all day and keeps right on eating like grandfather did.

When evening guests drop in, it's the signal for the housewife to serve a rich dessert. We often think of the popular cook as the one who prepares the most luscious pies and cakes.

Some people overeat because they are bored. Or maybe their trouble isn't overeating as much as it is nibbling the wrong kind of foods.

Sometimes overeating is due to a lack of parental love and attention or to a feeling of insecurity. The pleasure of eating may even be a substitute for the pleasure that should come from social, sexual, and economic attainments.

If any one of us is to reduce overeating and its inevitable result, overweight, he will not only have to learn what foods to eat, but he will have to understand the cause of overeating. Otherwise enough motive for changing the food habits usually doesn't exist and attempts to reduce often fail.

At \$35 an ounce the United States owns something over 20,000 long tons of gold, worth \$23,300,000,000. Nearly \$4 billion in silver is on hand, at \$1.29 per ounce.

My Neighbors



MAN AND BOY UNDER THE McCARRAN ACT—Polish alien Henry Kernkraut, of New York, holds his two-month-old son in his arms as he reads rules regulating his registration under the McCarran Act. The law became effective Dec. 24 and requires all aliens to register between Jan. 1 and 31 or face deportation.

Wisconsin Alfalfa Seed Production Down

Wisconsin's alfalfa seed crop this year is below average but a record production is indicated for the nation, according to the Crop Reporting Service of the Wisconsin and United States Departments of Agriculture.

About 570,000 pounds of clean seed were produced from the 15,000 acres of alfalfa harvested in Wisconsin this year and yields averaged 38 pounds per acre. Last year only 10,000 acres of alfalfa were harvested for seed and the production was 400,000 pounds of clean seed with yields averaging 40 pounds per acre. The production of alfalfa seed in both 1951 and this year is well below the 10-year average of 1,549,000 pounds of clean seed harvested from 24,200 acres with yields averaging 64 pounds per acre.

For the United States, the forecast of alfalfa seed production indicates a crop of 148,900,500 pounds of clean seed. This is 40 per cent larger than last year's crop and 91 per cent above the 1941-50 production. Yields may average 135 pounds of clean seed per acre from the 1,089,000 acres harvested. The nation's alfalfa seed crop is expected to be the largest on record although the acreage harvested is eight per cent below the record of 1946.

Current supply of alfalfa seed, including estimated production this year and carry-over, is estimated at 172,367,000 pounds of clean seed. This supply is 29 per cent larger than in 1951 and nearly twice the 10-year average supply.



A WOUNDED SOLDIER received blood plasma just a few yards from where he was hurt in Korea. Army Medical Corps men have reduced the death rate among wounded who reach medical care to 2.4 per cent, compared to 4.5 per cent in World War II and eight per cent in World War I.

STRICTLY FRESH

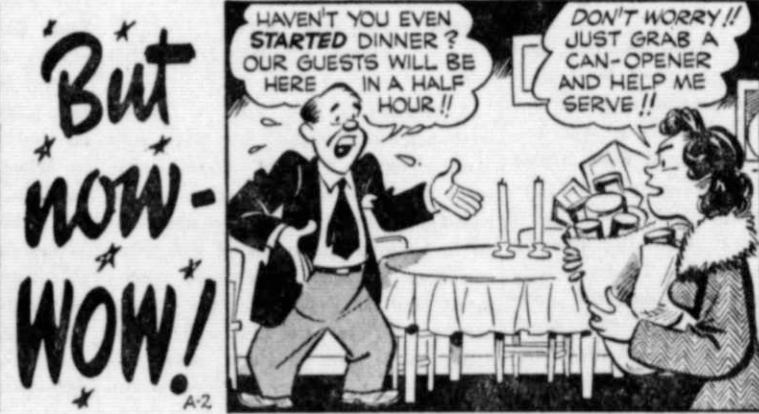
ISOLATIONIST housewife was jailed because she refused to pay taxes which might go for foreign aid. Sounds like a home-maker who wants to keep her cash at home.

For celebrating her divorce too noisily, a Milwaukee lady was fined \$100 of a \$200 cash settlement. Guess she lost more than just her better half in that deal.

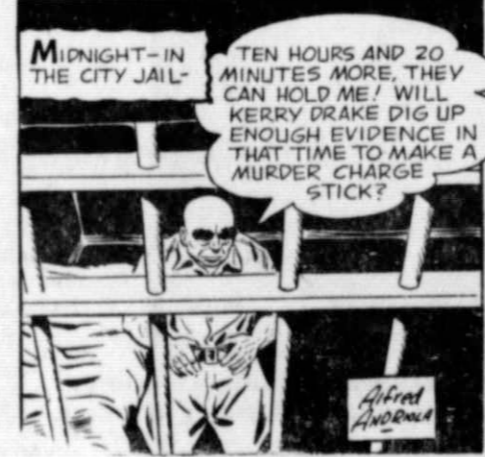
French lottery officials held \$7000 in unclaimed prize money, later found the winner had tossed the ticket in his incinerator by mistake. Bet he was plenty burned up!

A London motorist was fined for driving his car with one hand, shaving with the other and using the rear-view mirror. How close a shave can you get?

Animals released by a burglar in a Philadelphia pet shop made so much noise neighbors called police. Cops broke it up fast. No worse than humans, eh!



KERRY DRAKE



MARY WORTH'S FAMILY



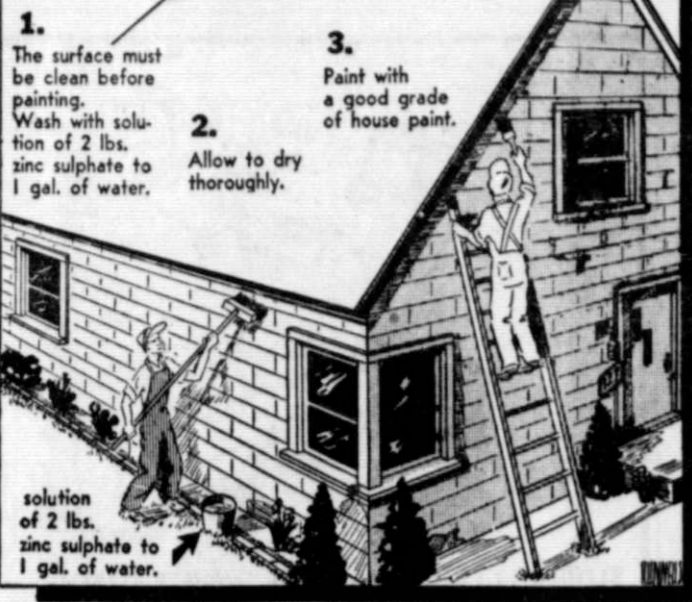
DIXIELAND SNOWMAN—"Delighted to know you suh!" greets Atlanta railroad man J. R. Hanie as he welcomes Smoky Snowball to the Sunny South. Made from snow piled high on freight cars from up north, the snowman was outfitted with pipe and cap by trainmen at the Inman Railroad yards in Atlanta, Ga.

HAIR BREADTH HARRY





TIPS ON PAINTING ASBESTOS SIDING



1. The surface must be clean before painting. Wash with solution of 2 lbs. zinc sulphate to 1 gal. of water.
2. Allow to dry thoroughly.
3. Paint with a good grade of house paint.

TIPS ON PAINTING ASBESTOS SIDING

Asbestos siding and shingles are made of Portland cement and asbestos fiber. When they are new, they have a hard finish which washes easily. But as the years pass, dirt sticks more tightly, and is harder to remove. When this happens, the best remedy is to paint. Since asbestos siding is made of Portland Cement and asbestos, a good kind of paint to use is cement paint. There are several good brands on the market. The siding should be washed before applying the paint. Cement paint should be applied while the siding is wet. A new rubber base paint has been developed for masonry sur-

faces, which includes asbestos shingles. Ask your dealer. Painting asbestos siding with ordinary house paint is sometimes successful, but is not recommended.

ORDER TODAY

"MR. FIXUM'S HANDY HINTS" is a collection of 31 selected jobs from this column, printed in attractive form, for 35c. Send coins, not stamps, to Ernie Gardner, 14189 Faust Avenue, Detroit 23, Michigan.

Hoarseness Called Danger Signal

Lost your voice? Ordinarily it's nothing to get excited about according to a bulletin from the Minnesota State Medical association.

If you want to get over it quickly, let other people do the talking for you. That's the best first-aid treatment. You can also help things along by steam inhalations at home and a little patience.

But don't overdo the patience. Today, the doctors warn that hoarseness and loss of voice can be signs of something more serious than a stubborn cold if they last longer than usual.

Two weeks is about long enough to wait, if you continue to be hoarse, before seeking medical advice. The thing to remember is that persistent hoarseness that lasts more than two weeks could be a symptom of several grave disorders including syphilis, tuberculosis and cancer; and none of these disorders yield either to patience or any self-medication.

Cancer of the larynx, in particular, is to be thought of when there is persistent voice trouble. This type of cancer can be discovered quite easily and early treatment brings permanent cure in the majority of cases. Yet deaths from undiscovered and untreated laryngeal cancer occur with alarming frequency because so many people ignore the first tell-tale signal.

That's why the doctors are emphasizing the importance of hoarseness and voice loss as the most important signal. These are the days of winter colds and coughs. Most of them, fortunately, clear up within a week or two; but prompt attention to those that don't will save trouble and perhaps a life later on.

Central Livestock Association, South St. Paul, reports the average shrinkage of 60 fat cattle in a 200-mile truck haul as just a whisker under 4%—44.3 pounds from an average weight of 1,122 pounds.

Psychiatry Lesson A MEDICAL SPECIALTY ADVANCES (NO. 1)

By Orin R. Yost, M. D. Medical Director, Edgewood Sanitarium

(Editor's Note: Dr. Yost is a graduate of the Medical College of Virginia at Richmond, studied psychiatry at St. Elizabeth's Hospital in Washington, D. C., taught psychiatry at Columbia University, New York, was division psychiatrist of the 79th division in World War II, and is presently Medical Director of Edgewood Sanitarium Foundation.)

Man has not always known what was best for his welfare. In the early days of Jenner's great discovery of a vaccine to prevent small pox, hundreds of thousands died, rather than submit to the seemingly-absurd practice of vaccination. Though printing had long been introduced and used to revolutionize civilization, only gradually, two centuries later, did there dawn upon man the realization that women might prove more useful if they were taught to read. Truly mankind has a poor ear for new music.

Today marks a new era, swift in its pace, marvelous in its achievement and unique in its potentialities. At such a time when wonder drugs are saving countless lives, when skillful surgery is plucking a soul from the brink of death itself, and when inoculations are successfully forestalling serious diseases, the person who ignorantly denies himself or his loved ones the therapeutic marvels of the age appears guilty of gross neglect. Truly, no longer can mankind afford to keep a poor ear for music. What think we, for instance, of the person indifferent to new research findings in the fields of cancer, of poliomyelitis and of heart ailments? Because of such a high incidence of these disabling maladies, the public encourages and supports the cause of research and avidly scans reports of the minutest degree of progress.

On the other hand, in the same difficult manner by which pediatrics finally advanced from its crawling to its walking stage, the medical specialty of psychiatry is experiencing a difficult period of development. It is almost unbelievable to think that in some sections of this country—the most progressive, the wealthiest and the greatest in the world—those who do not understand the significance of psychiatry actually sneer at it, shun it, ridicule it and disparage it. Though there has been, since the dawn of civilization perhaps, a certain kind of psychiatry, it has been only within recent times that this medical specialty has come into its own. Perhaps to only a few other fields has the unparalleled scientific progress of this age made so many contributions. Science has revealed in many instances the causes of mental illnesses and emotional disorders and has likewise produced many new therapies which are today effective in approximately 80 per cent of the psychiatric cases.

(To Be Continued)

Of more than 70,000,000 pieces of currency handled in Minneapolis Federal Reserve Bank in 1951, 28,000,000 pieces were "thrown out" as worn beyond further service, and 126 counterfeiters were detected.

ESTHER G.: Is nylon likely to be harmful to the skin?
ANSWER: Nylon is not considered in any way harmful to skin. If skin trouble develops it is likely to be the result of dyes used.



L'I' RED SCHOOLHOUSE— Absorbing the culture of the Soviets, an interested Mongolian girl reads a Russian textbook in a Buriat, Mongolian school-room situated on a collective farm. Standing like a shadow in the back of the room is the teacher whose job it is to indoctrinate these children with the principles of Marxism.

Sarah Anne's COOKING CLASS

Corn Bread Topping Puts a "New Face" on Meat Pie!



Look for the smiles that will light up family faces when you serve meat pie with delicious, crusty corn bread topping.

Here's a dish that has a winning way with left-over roast beef and plenty of good vegetables. It's practically a meal in itself, and it takes so little time to prepare. Your meat pie with corn bread topping can be served at the table in its baking dish. As the serving spoon breaks through the corn bread crust, you'll love the wonderful aroma that greets you, and really welcome the good flavor that has been sealed in by the corn bread. There will be no cold second helpings because the corn bread tends to hold the heat in.

Meat Pie With Corn Bread Topping (A good way to use left-over meat and vegetables)

- Filling:**
1 cup cooked, diced carrots
1 cup cooked, diced celery
1 cup cooked, diced potatoes
1/2 cup cooked peas

- 1 tablespoon grated onion
3 cups diced left-over roast beef
2 cups celery

- Topping:**
3/4 cup corn meal
1/2 cup flour
1/2 teaspoon salt
1 1/4 teaspoon baking powder
1 egg yolk
1/2 cup milk
1 tablespoon melted butter or margarine

(If self-rising corn meal and flour are used, omit salt and baking powder.)
Combine all filling ingredients in a 1 1/2-quart greased casserole. Sift together corn meal and other dry ingredients. Combine beaten egg yolk, milk, and melted fat. Add dry ingredients, mixing only until moistened. Pour batter evenly over meat and vegetables in casserole. Bake in a 400° F. oven, for 20 to 25 minutes, until the corn bread just starts to shrink from the sides of the casserole. Yield: 6 servings.

Anchovy Puffs

- 1/2 cup butter
1 3-oz. package cream cheese
1 cup flour
Anchovy paste

Cream butter, blend cheese. Mix with flour. Chill. Roll very thin and cut with 2-inch cookie cutter. Spread with anchovy paste. Fold over. Bake 10 minutes in an oven 400 degrees. Serve hot.

Stuffed Eggs with Asparagus Spears

- 2 lbs. asparagus
Strips of pimiento
French dressing
6 eggs hard boiled
2 tablespoons mayonnaise
1 teaspoon vinegar
1/2 teaspoon salt
Dash of pepper
1/4 teaspoon paprika
1/2 teaspoon dry mustard

Arrange 5 or 6 spears in a bundle and fasten with a strip of pimiento. Arrange on platter; drizzle French dressing over bundles. Chill. Top with stuffed eggs.

Stuffed Eggs

Halve the hard boiled eggs lengthwise; remove yolks and mash. Blend with mayonnaise, vinegar, salt, pepper, paprika and dry mustard. Refill whites using pastry tube.

Molded Cranberry Salad

- 2 cups fresh cranberries run through the food chopper
2 cups sugar
2 packages lemon flavored gelatin
2 cups hot water
2 cups pineapple syrup
2 cups crushed pineapple well drained
1 cup broken nutmeats
2 cups chopped celery
Combine cranberries and sugar. Dissolve gelatin in hot water. Add syrup, chill until partially set. Add cranberry mixture, pineapple, nuts and celery; Chill in a 1 1/2 quart ring mold until firm. Fill center with turkey salad.

Baked Glazed Ham

- 1 6-lb. canned ham
1 teaspoon dry mustard
1 cup brown sugar firmly packed
1/4 cup pineapple syrup from canned pineapple
Whole cloves
Remove ham from can; place on rack in shallow pan. Bake at 350 degrees for 1 hour. Remove from oven. With sharp knife, score ham surface 1/8 inch deep in diamonds. Mix mustard, sugar and pineapple syrup. Spread on ham. Stick a clove in each diamond. Bake 1/2 hour longer.

Peach Salad

- 10 canned peach halves
2 3-oz. packages cream cheese
1 3-oz. can candied fruits and peels
1/3 cup heavy cream
1/3 cup grated coconut
Drain peaches and dry halves thoroughly. Mash 1 package cream cheese with fork, add candied fruit and mix well. Fill peach halves with mixture and place 2 halves together. Fasten with toothpicks. Add whipped

cream to remaining cream cheese and blend. Roll peaches in this mixture until coated; then roll in coconut. Chill thoroughly. Serve on crisp lettuce.

Pineapple Coffee Cake

- 2 cups sifted flour
2 teaspoons baking powder
6 tablespoons sugar
3/4 teaspoon salt
1/2 cup shortening
1 egg beaten
1/3 cup milk
1 1/2 cups drained, diced pineapple
3 tablespoons butter
1/4 cup brown sugar
3 tablespoons sifted flour
Sift first 4 ingredients together. Cut in shortening. Combine egg and milk and add all at once to dry ingredients. Mix thoroughly. Spread dough in greased cake pan and arrange diced pineapple on top. Combine butter, brown sugar and flour. Mix together with a fork until of a crumbly consistency. Sprinkle with diced pineapple. Bake in an oven 400 degrees about 20 to 30 minutes.

Pattern of the Week



9329 SIZES 2-10

by Marian Martin

Pattern 9329: Child's Sizes 2, 4, 6, 8, 10. Size 6 jacket and jumper, 2 1/2 yards 35-inch nap; blouse, 3/4 yard 35-inch fabric. Send Thirty-five cents in coins for this pattern—add 5 cents for each pattern if you wish 1st-class mailing. Send to 170 Newspaper Pattern Dept., 232 West 18th St., New York 11, N. Y. Print plainly NAME, ADDRESS with ZONE, SIZE and STYLE NUMBER.



FAST COMMUNICATIONS are the difference between ineffective firepower and killing power, and the Reds are striving desperately to copy the U.S. system. Here a radio team directs artillery fire on Communist positions in Korea.

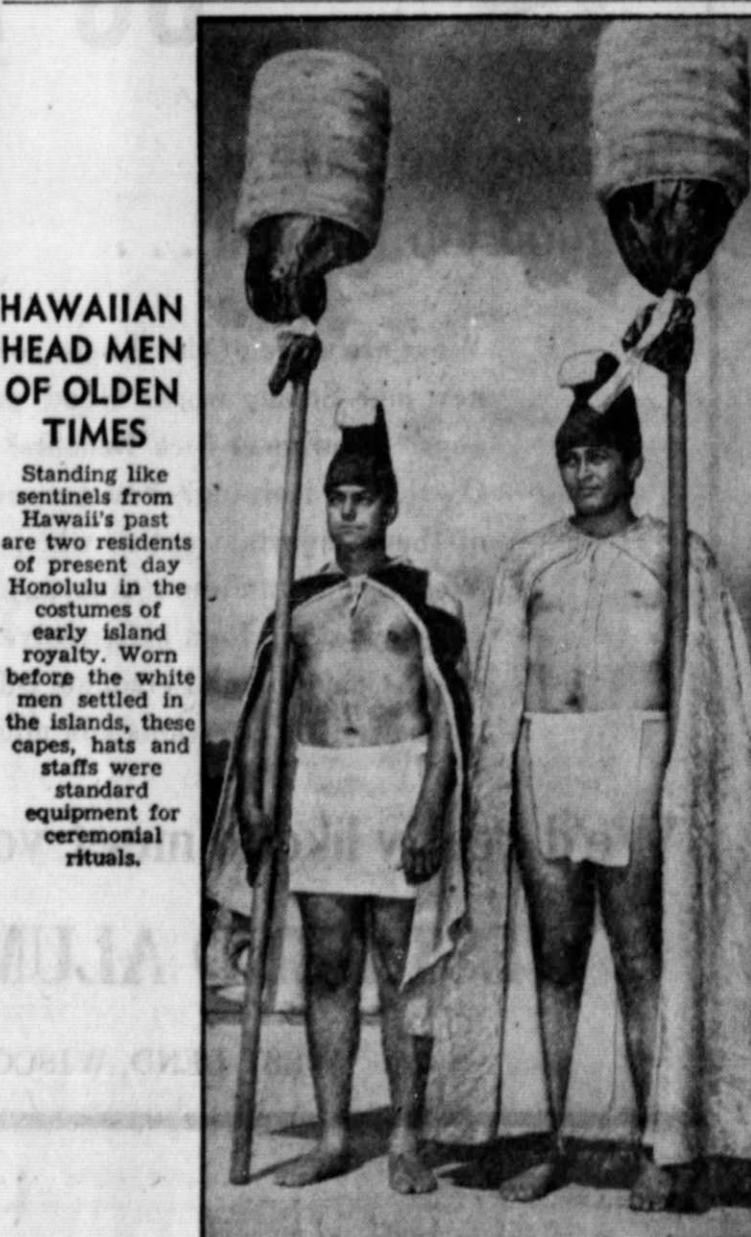


WASHINGTON, D. C.—(FHTNC)—Ski-plane or seaplane? The day is almost here when you won't be able to tell that it's a seaplane in the air. That deep hull seaplane silhouette may be about ready to give way to a new ski-plane look. When about to land, the ski-plane will extend its hydro gear, even as land-based planes now drop their wheels, and touch down smoothly on the water. It will then taxi on the skis to a ramp at the water's edge. Then, rolling on small beaching wheels in the skis, the ski-plane will roll up the ramp without any assistance and taxi to its parking space.

(Official U.S. Navy Photograph—1102130)



INCARCERATING INSECTS—Catching newly hatched beetles as they fall from the bark of giant Douglas fir trees will help forestry scientists plot their breeding habits and find new ways to combat them. Seen above, Paul Lavaterbach, researcher for the Weyerhaeuser Timber company checks a beetle trap on a fir in the company's Millicoma farm near North Bend, Ore. The Douglas-fir beetles destroyed over 3,000,000 board-feet of timber on the company's farm last year.



HAWAIIAN HEAD MEN OF OLDEN TIMES

Standing like sentinels from Hawaii's past are two residents of present day Honolulu in the costumes of early island royalty. Worn before the white men settled in the islands, these capes, hats and staffs were standard equipment for ceremonial rituals.

QUICK!
rub on
MUSTEROLE
to speedily relieve muscular
ACHES, PAINS
STIFFNESS

Give 'em
VELVEETA
—because it's rich
in food values
from milk...
DIGESTIBLE AS MILK!

Better tasting salads!

Miracle Whip
SALAD DRESSING

MILLERS

Furniture---Funeral Home

always Dependable and Reasonable

Want Ads

FOR QUICK RESULTS USE A LOW COST WANT AD TO SELL.

RENT
BUY
HIRE
TRADE
FIND

DON'T GAMBLE!—ADD SUPER VITA Bolster to your home grown grains and give them the Vitamin and Mineral balance to insure top production from your cows. Koch Feed Mill. 11

WANTED—Furn or milk route job. Contact Elroy Kutz, c/o Ray Broecker, R. 3, Kewaskum. 1t

FARM WANTED—Have several cash buyers for farms; 80 to 200 acres of upland with old buildings. Could be a rundown farm. KOSS REAL ESTATE, 1651 So. 11th St., Milwaukee, Wisconsin (4), Phone MI 5-6296. 1-30-3t

FOR SALE—Early oats. Leander Koepke, 1 1/2 miles south of Kewaskum. 1tp

FOR SALE—High grade Holstein service bull. Inquire Carl Melahn, Jr., R. 1, Kewaskum. 1-30-2tp

FOR RENT—Four-room upper apartment near Kewaskum. Phone 73F12. 1-9-1f

FOR SALE—Illinois ear corn in my barn or by the ton or load. K. A. Honeca, Sr., Kewaskum. 11-9-1f

NOTICE OF LETTING MOTOR OILS AND GREASES WASHINGTON COUNTY, WISCONSIN

Bids close at 10:00 A. M. Tuesday, February 19, 1953.

Sealed proposals will be received by the Washington County Highway Commission at the office of the Highway Commissioner at West Bend, Wisconsin up to 10 o'clock A. M. Tuesday, February 19, 1953 for furnishing and delivery of Diesel motor oils SAE 10, 20, 30, 40, and 50 to be used in both Diesel and Gasoline motors, must be a detergent type oil. Grease all types as specified in the bidding proposal. The requirements are for the next twelve (12) Month period for both motor oils and grease.

All bids must be on proposal forms prepared by the Highway Commission and must be submitted by 10:00 A. M. on Tuesday, February 19, 1953 at which time they will be publicly opened and read. Bids received which are not on the proposal forms prepared by the Department will be rejected.

Bidding procedure, specifications, Special provisions, and proposal forms for the above materials may be obtained at the Highway Commissioner's office, West Bend, Wisconsin, upon request.

The Washington County Highway Commission reserves the right to accept or reject any or all bids or to accept any bid which in their opinion is the most advantageous to Washington County.

By order of the Washington County Highway Committee.

Arthur Becker
WASHINGTON COUNTY
HIGHWAY COMMISSIONER
A. J. Cleary, Chairman
Adolph Schmidt
Ed. J. Campbell
1-23-2t

NOTICE OF LETTING TIRES AND TUBES WASHINGTON COUNTY, WISCONSIN

Bids close at 10:00 A. M. Monday, February 9, 1953.

Sealed proposals will be received by the Washington County Highway Commission at the office of the Highway Commissioner at West Bend Wisconsin up to 10:00 A. M. Monday, February 9, 1953 for furnishing and delivery of grade "A" first line tires and tubes for the next twelve (12) months requirements.

All bids must be on proposal forms prepared by the Highway Commission and must be submitted by 10:00 A. M. on Monday, February 9, 1953 at which time they will be publicly opened and read. Bids received which are not on the proposal forms prepared by the Department will be rejected by the

Commission. Bidding procedure, Specifications, Special Provisions, and Proposal Forms for the above materials may be obtained at the Highway Commissioner's Office, West Bend, Wisconsin upon request.

The Washington County Highway Commission reserves the right to accept or reject any or all bids, or to accept any bid which in their opinion is the most advantageous to Washington County.

By order of the Washington County Highway Committee.

Arthur Becker
WASHINGTON COUNTY
HIGHWAY COMMISSIONER
A. J. Cleary, Chairman
Adolph Schmidt
Ed. J. Campbell
WASHINGTON COUNTY
HIGHWAY COMMITTEE
1-23-2t

NOTICE OF LETTING STORAGE BATTERIES WASHINGTON COUNTY, WISCONSIN

Bids close at 10:00 A. M. Monday, February 9, 1953.

Sealed proposals will be received by the Washington County Highway Commission at the office of the Highway Commissioner at West Bend Wisconsin up to 10:00 A. M. Monday, February 9, 1953, for furnishing and delivery of storage batteries for the next twelve (12) months requirements.

All bids must be on proposal forms prepared by the Highway Commission and must be submitted by 10 A. M. on Monday, February 9, 1953, at which time they will be publicly opened and read. Bids received which are not on the proposal forms prepared by the department will be rejected by the Commission.

Bidding Procedure, Specifications, Special Provisions and Proposal Forms for the above material may be obtained at the Highway Commissioner's Office, West Bend, Wisconsin, upon request.

The Washington County Highway Commission reserves the right to accept or reject any or all bids, or to accept any bid which in their opinion is the most advantageous to Washington County.

By order of the Washington County Highway Committee.

Arthur Becker
WASHINGTON COUNTY
HIGHWAY COMMISSIONER
A. J. Cleary, Chairman
Adolph Schmidt
Ed. J. Campbell
WASHINGTON COUNTY
HIGHWAY COMMITTEE
1-23-2t

CARD OF THANKS

Our heartfelt thanks are extended to all our relatives and friends who helped us in any way during the time of sickness and after the death of our dear husband and father, George Kippenhan. These acts of kindness were deeply appreciated. We are especially grateful to the pallbearers, Rev. Rodenbeck, the organist, soloist, drivers, donors of floral pieces, ladies who served, traffic officers, Miller's, and all who showed respect.

Mrs. Geo. Kippenhan and Family

THANKS TO FIREMEN

We wish to express our thanks to the Kewaskum fire department for their hurried response and work done at the fire call at our farm home Tuesday afternoon. Their services were appreciated.

Mr. and Mrs. Clarence Rath

SMOLEY'S MINIATURE ALLEYS

TUESDAY NIGHT LADIES LEAGUE

	Won	Lost
Smoley's	37	23
Kellerettes	32	28
Metas	29	31
Prause's	22	38

High 3 games—Prause's 3151; high 3 individual—Shirley Kohler 698; high single game—Smoley's 1139; high single individual—Friedl

When in need of a Graduate Auctioneer

Call on
Col.
Lester Dreher
Phone 98F2
Kewaskum Wisconsin

WEDNESDAY NIGHT MEN'S LEAGUE

	Won	Lost
Town Cafes	40	20
Flynn Shell Service	32	28
Firemen	25	39
Dutch Mill	23	37

Week's high three games—Town Cafes 3329; week's high single game—Town Cafes 1142; week's high three individual—W. Mantheil 742; week's high single individual—

SAVE MONEY ON USED CARS \$\$\$

Used Car List

Chevrolets
1952 4-d Dem. Powerglide
1952 4-d Demonstrator
1941 Special Deluxe 2-d
1938 Master 2-d
1937 2-door Sedan
1936 Master 2-d

Buicks
1941 4-d Special
1950 Special 2-d
1941 Super 4-d
1940 Super 4-d

...
1949 Mercury 2 d, overdrive
1946 Nash 600 4-d
1948 Mercury Convertible
1939 Ford 2-d

Used Trucks

1952 Chevrolet 1/2-ton pick-up dem.
1951 Chevrolet 1 1/2 ton L.W.B.
1940 Chevrolet 1/2-ton Pick-up
1940 Chevrolet 1/2-ton Delivery
1938 Ford 1/2 ton Pick-up
1937 Chevrolet 1/2-ton Panel

SCHILL MOTOR INC.

Open Evenings 'Till 9
Campbellsport Ashford
Phone 111 Phone 38F1

Harold Schlosser 267.

Large flocks of redpolls are wintering in southern Portage county. Usually small flocks of these birds are present but this winter flocks

number up to 300 birds. Crows are also abundant. Usually 17 crows together would be considered a good-sized flock, but field men in the Portage county area are seeing flocks of around 200.



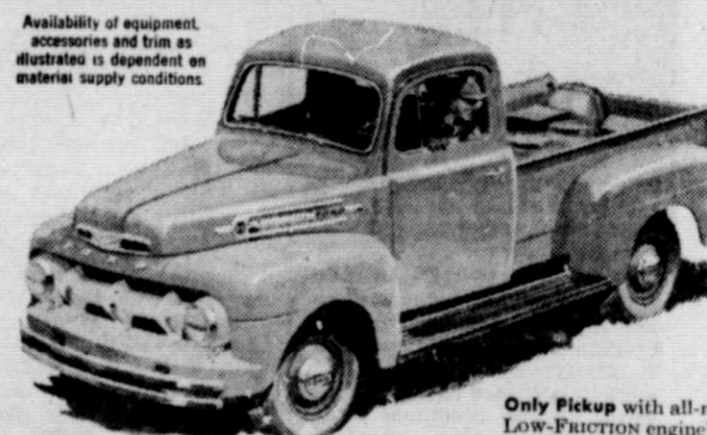
SUPERSITIOUS . . . HE WON'T JUMP UNLESS THEY'RE FROM LITHIA BREWERY

Over ten barrels he can fly
The spirits in them keep him high

ENJOY FLAVORFUL LITHIA BEER!



Now! Get the BUY of a lifetime on a new Ford Pickup!



What a "deal" for you! SEE US TODAY!

"See Your Nearest Ford Dealer" Wisconsin's Finest Automobile Dealers



When you choose a new job . . .

TALK TO US FIRST

Because we have a good job for you . . .

What are some of the things you want in your new job? Steady work? Good pay? Paid Holidays? Insurance? Sick Benefits? Vacation time? On-the-job training? You get each and every one of these important extras when you work for the West Bend Aluminum Company. Plus all these you're working for a progressive, growing company. Come to our Personnel Office today and let us answer any questions you might have.

We'd really like to meet you...

WEST BEND ALUMINUM CO.

WEST BEND, WISCONSIN



Like always attracts like. That's why the girl who's fastidious about regular dry cleaning always attracts the well-dressed man . . . and vice versa, CUE TO YOU: Restore fabric life, fit--freshen up tired clothes with our fast, efficient dry cleaning.



—YES, It's Miller's at Kewaskum most reasonable prices. Open daily or quality home furnishings at until 6, Fridays until 9 p. m. Free deliveries.

Friendly Advice

FARMERS

Have all your spring repair work done now--before the busy season on chopper boxes gets under way. We can give you prompt service at this time.

THOENNES MFG. CO.

General Blacksmithing and Repairing
KEWASKUM

Leroy J. Goring

and

Luke J. Kauth

Announce their association in the general practice of law under the firm name of
GONRING & KAUTH

with offices in

Security Building, West Bend, Wisconsin

and

State Bank Building, Slinger, Wisconsin

February 1, 1953

West Bend 1660
Slinger 110

KEWASKUM STATESMAN
PUBLISHED WEEKLY

D. J. HARBECK, Publisher
W. J. HARBECK, Fd.-Business Mgr
Entered as second class matter Oct. 17, 1896, at the Post Office at Kewaskum, Wis., under the Act of Congress on March 3, 1879.

SUBSCRIPTION RATES:
One Year \$2.50
Six Months \$1.25
Single Copy .05

Around The Town

—Mr. and Mrs. Ed. Gutschentritter attended the funeral of Mrs. Mary Sauer at Allenton last week.

—Deanna Manthel spent last week end with her sister Ruth at Milwaukee and also attended the Holiday on Ice at the Milwaukee arena.

—Mr. and Mrs. Lawrence Laatsch and children of Boltonville visited Sunday evening with Mr. and Mrs. Edward Dreher and family.

—MODERN PAINLESS CHIRO-PRACTIC. ROBERT G. ROBERTS, D. C., 702 ELM ST., WEST BEND, WIS. 7-27-1f

—Members of the St. Lucas Ev. Lutheran church board and the pastor, Rev. Gerhard Kanless, attended a circuit conference at Fond du Lac.

—Mr. and Mrs. Roman Keller, Mr. and Mrs. Ray Keno, Myron Backhaus and friend attended the Holiday on Ice at the Milwaukee arena Saturday night.

—Marvin Martin of the Kewaskum fire department taught first aid to members of the Fillmore and Boltonville fire departments at a meeting held at Fillmore Monday evening.

—Mrs. Louis Doms, Mr. and Mrs. Arnold Schmidt and son, Miss Adeline Doms and Mr. and Mrs. Reuben Opperman attended the funeral of Mrs. Margaret J. Erickson at Fond du Lac Saturday.

—The Washington County Chapter of Gold Star mothers held their installation of officers on Jan. 22 at the Electric Co. hall in West Bend. Mrs. Edna Romaine of Kewaskum was installed as musician.

—Mr. and Mrs. Virgil Bird, Mr. and Mrs. Melvin Hackbarth and Miss Elvira Meyer motored to Camp Breckinridge, Kentucky, to spend the week end with Pvt. Vincent Nigh. Pvt. Nigh is the son of Mr. and Mrs. Elmer Nigh of Route 2, Campbellsport.

—SEE FIELD'S FURNITURE MART AT WEST BEND BEFORE YOU BUY YOUR FURNITURE, RUGS AND HOUSEHOLD APPLIANCES. YOU CAN BUY FOR LESS AT FIELD'S, WHY PAY MORE? FIELD'S FURNITURE MART, WEST BEND, WIS., TELEPHONE 988. OPEN FRIDAY EVENINGS, OTHER EVENINGS BY APPOINTMENT. FREE DELIVERY.—adv.

County Holstein Breeders Meet to Allot Project Calves, Elect Directors

The annual business meeting of the Washington County Holstein Breeders' association was held at the Wisconsin Electric Power Company hall, West Bend, on Friday evening of last week. The allotment of 19 share-basis sire calves was one of the problems to be considered at the meeting. Breeders consigning animals to be raised include the following:

Ray Bast, Rockfield, R. 1; Elmer Becker, Hartford, R. 3; Sylvan Becker, Hartford, R. 3; Norbert Dettmann, R. 1, Random Lake; Hiram Larson, West Bend, R. 2; Herbert Lepion, Hartford, R. 3; Christ Mayer, R. 1, Slinger; Edward Meilus, Jackson, R. 1; Albert Kuenzi, Rockfield, R. 1; Fred Pamperin, West Bend, R. 3; Paul Pamperin, R. 1, Allenton; F. C. Schroeder, West Bend, R. 4; Guido Schroeder & Ekbert Muth, West Bend, R. 5.

The 4-H and FFA boys allotted calves include:

Harvey Bastian, West Bend, R. 5; Math. Dornacker, West Bend, R. 5; Willard Goeden, West Bend, R. 2; Paul Krueger, West Bend, R. 3; Daryl Kuenzi, Colgate, R. 1; Roger Maas, West Bend, R. 5; Elroy Mittelstadt, Hartford, R. 2; Jerry Schacht, Kewaskum, R. 2; Lloyd Schacht, Kewaskum, R. 2; Reuben Schultz, Kewaskum; Dewey Schiele, Slinger, R. 1; Richard Schmidt, Campbellsport, R. 3; Roger Schoedel, West Bend, R. 2; Gerald Schultz, Kewaskum, R. 3; William Seefeldt, Kewaskum, R. 1; Raymond Sippel, Campbellsport, R. 3; James Walters, West Bend, R. 3; Donald Peters, West Bend, R. 3.

A discussion on the newer method of marketing milk was presented to the group by Evert Wallen-

feldt, dairy industry specialist of the College of Agriculture. He commented that the butterfat of milk is only one of the valuable constituents of milk. Besides butterfat, milk contains about 8 per cent by weight of other valuable food materials, many of which are in great demand today. He supported his statement by the fact that sales of skim milk are increasing very rapidly.

Motion pictures of the livestock judging at the 1952 county fair were shown by Mrs. F. C. Schroeder, Norbert Dettmann, town of Farmington, was elected as a director of the association.

CALLING ALL COUNTY WRITERS TO MEETING

Are you interested in writing? Be it hobby? Professional aspirations? Pleasure? Sports? Poetry? Mystery? Professional? Amateur? You are? Well, we're asking you to "come out from under" and accept our invitation to attend a very important meeting at the West Bend Public Library on Monday evening, Feb. 2, at 8:00 o'clock.

You see, on this particular evening Miss A. Van Antwerp of Wisconsin Dells, a representative of the Wisconsin Rural Writers association, will be on hand to help Washington county folks interested in writing, organize their own County Writers club.

A group such as this has been proven to be a real fellowship of fun for writer-enthusiasts, plus a fine way to improve one's own writing technique. Other counties have

Math. Schlaefel OPTOMETRIST
Eyes Tested and Glasses Fitted
Campbellsport, Wis.

August W. Bartelt INSURANCE

Fire	Life
Windstorm	Health
Automobile	Accident
Public Liability	Burglary
Plate Glass	Robbery

Theatre Bldg., Kewaskum
Phone Kewaskum 34F3

fine, energetic writer-organizations and its time we show them our "Washington county talent."

Therefore, we urge you to join us on Monday evening. And bring a friend... anyone interested in "setting his thoughts down on paper."

We'd like to see every county town and community represented! Monday evening, that is, Feb. 2, at eight o'clock.

Rev. Louis Riesch

DEALERSHIP

For Willys Farm Jeep and Implements in this Territory. Write ED. MAZZONI MOTORS, INC.
Attention: Peter Loffredo.
3617 W. Wisconsin Ave.
Milwaukee, Wisconsin

Endlich's sez It's a Fact!

ONE NOT BORN IN AMERICA MAY BECOME PRESIDENT

AND SEE FUTURE PRESIDENT OF THE U.S.A.

And We Can Prove It

One Not Born in America May Become President

The Constitution specifies "natural born—and not native born. Therefore, one born of American parents in a foreign country would be eligible in respect to citizenship. 1. "Popular Questions Answered"—Geo. W. Stimpson.

A job well done day by day—that is the mark of any success—that is why those who know come back here—again and again!

ENDLICH'S
Jeweler and Optometrist
ESTABLISHED 1906
KEWASKUM, WIS.

FAT OR THIN SHORT OR TALL OSHKOSH B'GOSH

FITS 'EM ALL and Beats 'Em All for Wear!

Work shirts, pants, overalls and other workwear that seem such bargains at first, sometimes cost much more per week or month of wear than Oshkosh B'Gosh garments. In addition—Oshkosh B'Gosh gives you dresswear good looks as well as more wear per dollar. And what comfort! What fit! The same principles which made Oshkosh B'Gosh world-famous for best fitting overalls are employed in all types of Oshkosh B'Gosh Workwear. Why settle for less? Ask to see your favorite style of workwear.

OUR DADS HAVEN'T GOT A THING ON US!

OSHKOSH B'GOSH WORKWEAR

Look for This Display In Our Store!

Today, Jan. 31st, last chance to buy Oshkosh Overalls & Jackets at \$3.49

L. ROSENHEIMER
DEPARTMENT STORE
KEWASKUM, WIS.

Why do it the hard way THIS winter?

Months of below-freezing weather are ahead and with them your winter-washdays. Icy fingers, chapped hands and endless colds. Why hang your clothes in a "deep-freeze" all through another winter? WELCOME WASHDAY... weather or not...

get an **ELECTRIC CLOTHES DRYER**

Put an end to washday weather worries. The finest drying weather in the world is right inside your automatic electric clothes dryer—available at the flick of a switch. Clothes dry "sunshine" fresh... last longer and stay lovelier!

See your dealer or...

THE ELECTRIC COMPANY
WISCONSIN ELECTRIC POWER COMPANY

NEW CORONADO T. V. SETS

NOW COME IN TWO SERIES

TOWN and COUNTRY SERIES	SUPER POWERED SERIES
Performance Leader in the Low Priced Field. Prices start at \$179.95	Remarkable Triumph in Long-Range Reception. Prices start at \$249.95

Gambles Authorized Dealer
FRANK FELIX KEWASKUM

IGA Grocery Specials

IGA WHOLE KERNEL CORN, 17 ounce can, 6 for	1.00
IGA SUGAR PEAS, 17 ounce can, 6 for	1.00
IGA TOMATOES, 19 ounce can, 6 for	1.24
IGA CHERRIES, 20 ounce can, 6 for	1.45
CAMPBELL'S PORK & BEANS, 16 ounce can, 2 for	27c
IGA APPLESAUCE, 15 ounce can, 7 for	1.00
IGA APRICOTS, 16 ounce can, 4 for	1.00
IGA GRAPE JAM, 24 ounce jar	29c
IGA BLUEBERRIES, 15 ounce can, 3 for	85c
CHOCOLATE COVERED PEANUTS, Pound	45c
IGA CATSUP, 14 ounce bottle, 2 for	39c

Marx I.G.A. Store
Kewaskum, Wis.

And, Ed, did you know that you can save .20 on a \$60.00 money order when you get it at the Bank of Kewaskum

Savings all along the line when you buy your money orders here

FEES:

.01 to 5.00	.05
5.01 to 10.00	.10
10.01 to 100.00	.15

Bank of Kewaskum
Kewaskum, Wisconsin
Member Federal Deposit Insurance Corporation

The Food for Growing Boys

Every growing boy should have plenty of fresh, whole milk every day.

Make it Cherry Grove Dairy's Milk—a full quart a day, and you'll be certain of purity!

Cherry Grove Dairy
Kewaskum Phone 154F3

**Behind The Scenes
In American Business**
By Reynolds Knight

NEW YORK—Running a small business of one's own is a hazardous way to make a living, the Office of Business Economics of the Department of Commerce concludes on the basis of a recent survey. This will not be news to the founders of 5½ million companies organized between 1946 and 1951; half of these companies had been liquidated by the end of the latter year.

Greatest mortality was among retailers. Fewer than 65 per cent of all retail establishments organized in the period under review survived their first year in business, and only 21 per cent of them marked a fifth birthday. The figures are for all companies, but most of the firms are (or were) small ones.

The department adds that its figures don't mean most companies went broke. No more than a fourth of total business transfers, and a bare half of total liquidations, occur as the result of losses or as expedients to avert losses. In fact, retiring Secretary of Commerce Charles Sawyer asserts that there are more business firms per thousand potential customers than there were in 1900, despite the recurring refrain that a few big corporations are devouring all the little ones.

POINT IV, JR.—Members of the National Junior Vegetable Growers Association, at their recent convention in New York, decided to correspond with farm youngsters in other lands, and seek to instruct them in the techniques whereby U. S. farmers get the world's highest yields of high quality foods. Seeds for staple food-stuffs will be sent to other lands. Nadine Thompson, 18, of Lakewood, Colo., this year's NJVGA champion, won the endorsement of Mme. Pandit, India's chief delegate to the United Nations, for the idea. Nadine herself, as a student of the American University in Lebanon, where her father heads a U. S. mission, is familiar with agricultural needs in the Near East.

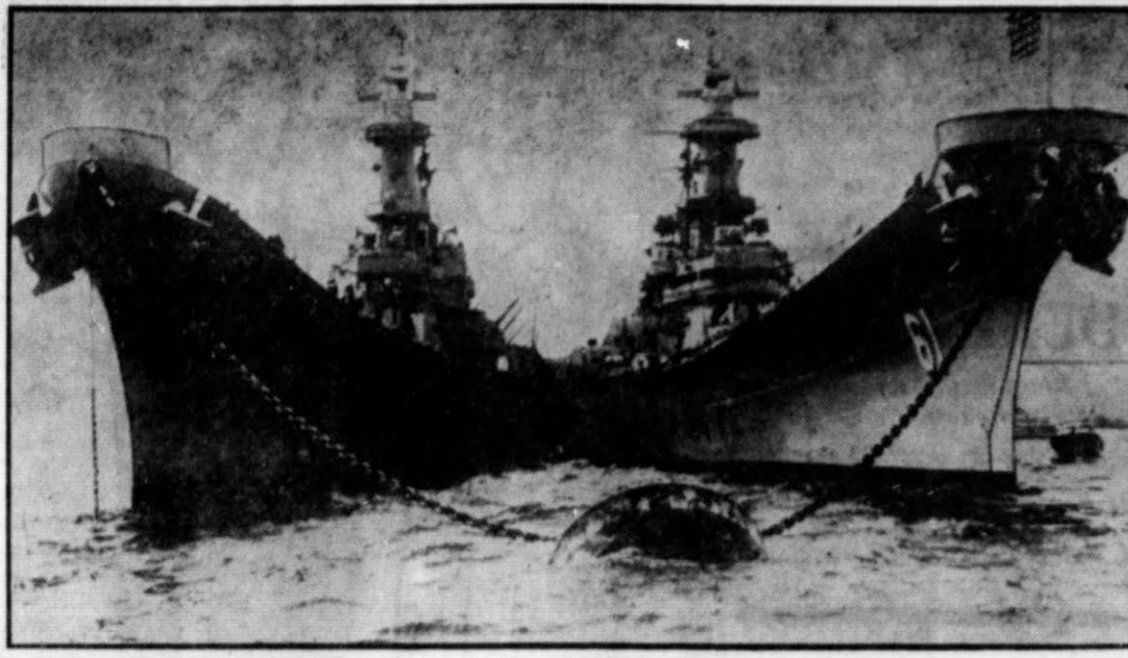
LABOR - STRETCHERS — Industry used more and more instrumentation and automatic control equipment in 1952 to expand production in the face of a tight labor supply. Henry F. Dever, president of the industrial division of Minneapolis-Honeywell Regulator Company, reported as 1953 began. Mr. Dever said the instrument industry could find a great market for 1953 and future years in continuing expansion of the process industries, the spur to the chemical industry of defense requirements, the rise of petrochemistry, and the replacement of obsolete or obsolescent plant originally built before the days of automation.

FOOLPROOFING PEOPLE — Industrial accident prevention in 1953 and beyond must turn more and more to correcting the human factor in mishaps, said Charles E. Hodges, president of the National Association of Mutual Casualty Companies, in an interview on the 1953 outlook. Nearly all machines have been rendered as mechanically safe as possible in the last few years of safety-consciousness, declared Mr. Hodges. While a great deal of work has been done on finding the accident-prone worker and correcting his faulty work habits, the insurance executive pointed out, much remains to be done simply because human beings are more complex than the gadgets they operate.

BIG CHILL FOR '53—Servel, Inc., expects its best year of civilian sales in 1953, according to W. Paul Jones, Servel president. Mr. Jones says that Servel's pioneering feat of bringing the refrigerator out of the kitchen with its electric Wonderbar has shown the way for the whole industry to benefit. Saturation of the market has been pushed far into the future if every home can be persuaded to install two refrigerators, he pointed out. A second major advance in household refrigeration was the unveiling for 1953 of the "Ice Maker" refrigerator, which makes crescents of ice rather than cubes, and stacks them in a basket instead of trays.

PEN OUTLOOK BRIGHT—Business confidence, development of new products, and removal of more controls of raw materials will all help 1953 sales in the writing equipment industry, according to Wilbur K. Olson, president of the Fountain Pen and Mechanical Pencil Manufacturers Association and director of development for the W. A. Sheaffer Pen Company. If confidence in the new administration is further fed by reduced spending, and metals and new plastics are available in sufficient quantity, he explained, full production will be assured, and if the excise tax on pens is allowed to expire on schedule a corresponding rise in demand can be expected.

Total investment in United States railroads is 32½ billion.



BUMPING BATTLESHIPS—The United States Navy's twin sea giants, the USS Iowa and USS Missouri, ride side by side at anchor during a pause in their job of carrying the United Nations war to the North Korean enemy. This picture, seen above, shows the first meeting of two dreadnaughts in a war zone since the dark days of World War II.

Decided Increase In Size of State Fawns

Madison—One definite result of deer herd reduction in central Wisconsin has been a decided increase in the size of fawns, Conservation Warden Chauncey Weitz reports to the conservation department.

"One factor concerning the deer season which was encouraging," Weitz says, "was the increase in the size of the fawn herd reduction has been in progress. Some wardens and rangers who have been in this area for years commented upon the size of the fawns, many of which weighed better than 80 pounds. Three or four years ago the weight of a fawn was 40 to 50 pounds. This definitely shows that a herd reduction was necessary to bring

back the proper balance between the deer food and the deer herd so that the herd could build up into a herd of large, strong, healthy animals. I think the average hunter does not take this into consideration."

Weitz adds: "Regardless how many deer we had when the season opened, we still have the bulk of them with us."

Mary G.: What is the cause of a "lump in your throat"?

Answer: Usually the feeling of a lump in your throat, called globus hystericus, is due to emotional distress. It goes away when you understand what is causing it. Sometimes, it is caused by an organic disease. Careful diagnosis by a physician can tell the difference.

Protect Child's Health By Immunization

Wise parents are as anxious as public health authorities to have their children actively immunized against smallpox, diphtheria, tetanus, and whooping cough.

They understand that if you protect children against such diseases, you avoid other accompanying infections and resulting disabilities, and you lay the groundwork for a healthy, happy adulthood.

In the past 40 years the annual number of deaths from whooping cough in Wisconsin has been cut from 224 to three, all in infants under one year. Much of this improvement undoubtedly has been due to the effectiveness of proper immunization, especially in recent years.

But just because the disease appears to be under control doesn't mean that your baby would be safe if an epidemic hit your community.

Whooping cough is particularly dangerous for babies and young children. It is most catching before the "whoop" appears, when it seems to be only a cold. A severe attack may lead to pneumonia, cause defective hearing, weaken eyes, or damage the heart.

Immunization against whooping cough should be started when a child is three or four months old. The three initial doses are usually spaced one month apart. Many physicians prefer to give a mixture of diphtheria and tetanus toxoid with the whooping cough vaccine for simultaneous immunization against all three diseases. They probably will recommend that a booster dose be given a year later and another before the child starts school.

Not every immunized child will escape whooping cough but those who are immunized will have milder cases.

Bible Comment:

Jesus' Friends Included People Of Every Type

ALTHOUGH there were many during Jesus' lifetime who called themselves His enemies, He also had many friends. They were people from all walks of life and included the very rich and the most poverty-stricken people of the Holy Land.

Most striking of all was the Saviour's love of little children. He included many thousands of them among His friends and made a point of letting them come to Him, rebuking His disciples who turned away the mothers bringing their children to see the Master.

His closest friends were the disciples themselves. They represented a cross-section of the society of the time. But there were great men of the age who felt a close friendship for Jesus. There was the Roman Centurion whose faith He commended; and Nicodemus, the ruler of the Jews.

There were friends who grieved for Him after the crucifixion, such as the man who claimed His body. Other wealthy men invited Him to their homes. Among these was Simon, the Pharisee, whose hospitality He accepted but whom He lovingly rebuked.

And then there was the legion of friendless, sick, needy and lonely who felt His great compassion. There were the crowds of common people who followed Him and listened to Him as He preached. Such a crowd was present to see the miracle of the loaves and the fishes.

Also, He accepted the "sinners" and people of ill repute who sincerely wanted to become more worthy. There were women among the friends of Jesus. They followed Him to Calvary and met Him on the Resurrection morning.

We can never know the names of all these people. We do know, however, of their great love and adoration. We know of His deep, everlasting love for them. Jesus was, and is, a friend to all, whether they accept that friendship or not.

**"This I Believe"
In Book Form**

"This I Believe," the five minute inspirational radio series, heard at 10:55 p. m. Monday thru Saturday on WCCO, will appear in book form. The book, which went on sale November 24 at all bookstores, contains a foreword by Edward R. Murrow and contributions by such people as Lionel Barrymore, Helen Hayes, Herbert Hoover, Dimitri Mitropoulos, Mrs. Eleanor Roosevelt and Lauritz Melchior.

Minneapolis has been represented by WCCO's own Dr. E. W. Ziebarth and Carroll Binder, Editorial Editor of the Minneapolis Tribune. The program seeks to answer the difficult question of what a man believes in these uncertain times. Thoughtful men and women of all walks of life, known and unknown, come to the CBS microphone with their inspiring personal philosophies. All are successful in their chosen professions and in their adjustment to life and bring to the program their innermost beliefs thus helping the listener to clarify and strengthen his own.

Busy Schedule

Husband and wife teams are no longer unusual in the world of show business and WCCO's Jeanne Ariand and Willie Peterson are no exception. Jeanne, who in private life is Mrs. Willie Peterson, and her versatile musician husband have found they can very nicely handle their combined careers of being WCCO artists and mother and father to Linda Jean, 6, and Billie, 21 months.

Jeanne is the popular vocalist heard on such programs as Breakfast With Bob, Barn Dance Jamboree, and Red River Valley Gang. Willie alternates on the piano and organ on Ed Viehman's Mr. No Body program and has just now taken over the musical portion of Cedric Adam's new WCCO program, A Little Talk, A Little Tune.

Although their fields are the same, the Petersons only appear together on one program, Showboat, heard Fridays at 7:30 p. m. Jeanne and Willie were married in 1943 and have found their dual roles an asset to a happy and interesting life together. Luck has been with them as far as their WCCO schedules go, for while one is at the studio, the other is able to remain at home as babysitter!

Recipients of old age assistance were most numerous in Minnesota in 1939, when 65,223 were recorded. Lowest recent year was 54,082 in 1947.



THANKSGIVING "FILLS THE AIR" with a special fragrance of turkeys roasting and pumpkin pies baking. Check over these tips for roasting the bird before you start the job:

1. After turkey is ready for oven, grease skin thoroughly with fat. And lay a fat-moistened cheese cloth over top of bird during roasting.
2. Place turkey on a rack in shallow pan.
3. Roast at a constant low temperature (325° F.).
4. To test doneness, move drumstick up and down—the leg joint should give readily.

FOR A SECOND-DAY FEAST, use the remaining turkey or chicken in this fluffy-topped casserole:



Baked Turkey (or Chicken) Puff
1 can (1½ cups) condensed cream of mushroom soup
½ cup milk
1 cup cubed cooked turkey or chicken
2 cups cooked green beans, drained
4 eggs, separated
¼ cup shredded American cheese
Combine soup and milk in a 1½-quart casserole; add turkey (or chicken) and beans. Bake in a moderate oven (375° F.) for 10 minutes. Meanwhile, beat egg yolks well; add cheese. Beat egg whites until stiff and fold into egg-cheese mixture. Pile fluffy egg topping on hot turkey (or chicken); continue baking for 30 minutes. Makes 6 servings.

MEALS IN A DASH are the custom just before the holidays. And you're ready for all of these if you have a full shelf of condensed soups. The family will smack lips over cream of chicken soup with egg salad sandwiches or tomato soup with open-face melted cheese and bacon sandwiches.

Sports Afield

By Ted Kesting

"In no other form of fishing have I found spinning so greatly superior to other methods as in catching crappies. Certainly, at times, I've had grand sport taking them with a fly rod. But I've found the places and times quite rare when fly fishing for them could be called really successful." That was Jason Lucas talking.

Without going into details, this is why he believes that: For one thing, lures small enough to be cast well with a fly rod are generally just too small to appeal to many crappies. And lures that can be used with a casting rod are just too large. But a lure of from one-eighth ounce to one-fourth ounce seems to strike a crappie as just what he's been swimming around looking for all his life. Spinning tackle was developed for, and is best suited to, lures of this size.

Do I hear somebody ask if spinning will get more crappies than the usual live minnows? The answer is yes. As you know, crappies are found in large schools. Any day during the season you can find a flotilla of boats anchored close together over these crappie beds; each angler is watching a bobber beneath which swims a live minnow. When a group of crappies happens to come under a boat, the occupants have a lot of fun hauling in fish while those in other boats look gloomily on wondering when the blamed critters will head their way.

But what happens when the man with spinning tackle comes along and anchors? Does he sit patiently waiting for the slow-moving crappies to come to him? He does not. He sends his lure to the crappies.

Let's put it this way: A lure is effective only for the distance

that a fish will come to take it. In clear water a bass or pike may come 15 feet, sometimes much farther, to take a lure. But ordinarily a crappie won't come over three feet or so. So a minnow bait may be called effective only in a circle around it with a radius of three feet, which gives us approximately 28 square feet of area. But supposing the man with spinning tackle is able to cast 50 feet, a moderate cast; he is fishing about 8,000 square feet! Some 286 times the area of the live-bait man.

Now this doesn't mean that the spinner will catch 286 times as many crappies. But his lure is brought close to so many more crappies he's just bound to catch a lot more.

Minnesota fertilizer consumption in 1941 was 32,458 tons, in 1951 202,248 tons.

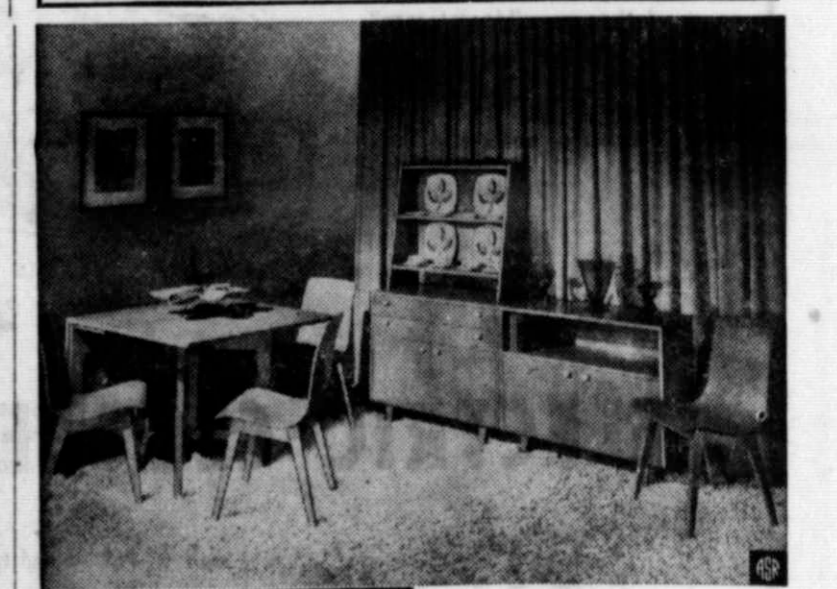
WINTER FOLLIES



Old Friends—Old Problems



Furniture Fashions



Perhaps no room in the American home has undergone such a complete style change as the dining room. The dining room of the left was considered smart—and quite typical of its era—in 1926. Today, flexible modern dining room pieces adaptable for either the formal dining room or the combination dining-living room, shown at the top, are preferred by the 1952 homemaker, who more often than not does not have a separate dining room. Dining, except at holiday time, is getting more casual and informal all the time, though most women insist on a table that may be opened, on special occasions, to accommodate a full family gathering. Furniture stores are now featuring an amazing collection of items for informal meals: hostess carts on wheels, stacking tables for TV suppers, chests that cleverly provide storage space for linens, china, silver, trays, etc., and room dividers that decoratively separate the living room from the dining area.

Now that the holiday season is approaching, the dining table is of utmost importance. The furniture shown here is of mahogany in a warm light brown finish called mocha.

WEEKLY CROSSWORD PUZZLE

Prime Minister

- | | | | |
|--|---------------------------|---------------------------|----------------|
| HORIZONTAL | 60 Investigated | VERTICAL | 1 Ridicule |
| 1,7 Pictured prime minister of Union of South Africa | 2 Sorrowful cry | 2 Sorrowful cry | 3 Nothing |
| 12 Think | 4 Id est (ab.) | 4 Id est (ab.) | 5 Always |
| 13 Declaims | 6 Jacob's son | 6 Jacob's son | 7 Shed |
| 15 Spoken | 8 Area measure | 8 Area measure | 9 Fold |
| 16 Sinful | 10 Upon | 10 Upon | 11 Centaur |
| 18 Mail | 12 Portends | 12 Portends | 13 Allowance |
| 19 Underworld god | 14 Allowance | 14 Allowance | 17 Preposition |
| 20 Publishes | 15 Spoken | 15 Spoken | 20 Urges |
| 22 Greek letter | 16 Sinful | 16 Sinful | 21 Calmer |
| 23 Boy's nickname | 18 Mail | 18 Mail | 24 Willôw |
| 24 Either | 19 Underworld god | 19 Underworld god | |
| 25 Plural ending | 20 Publishes | 20 Publishes | |
| 27 Not (prefix) | 22 Greek letter | 22 Greek letter | |
| 28 Meaning | 23 Boy's nickname | 23 Boy's nickname | |
| 30 Cook in oven | 24 Either | 24 Either | |
| 32 Three-toed sloth (pl.) | 25 Plural ending | 25 Plural ending | |
| 33 High priest | 27 Not (prefix) | 27 Not (prefix) | |
| 34 Wise men | 28 Meaning | 28 Meaning | |
| 36 Titles | 30 Cook in oven | 30 Cook in oven | |
| 39 Manuscript (ab.) | 32 Three-toed sloth (pl.) | 32 Three-toed sloth (pl.) | |
| 40 Concerning | 33 High priest | 33 High priest | |
| 41 Comparative suffix | 34 Wise men | 34 Wise men | |
| 42 Two (prefix) | 36 Titles | 36 Titles | |
| 43 Employ | 39 Manuscript (ab.) | 39 Manuscript (ab.) | |
| 45 Ball game | 40 Concerning | 40 Concerning | |
| 50 Secreted | 41 Comparative suffix | 41 Comparative suffix | |
| 51 Far (prefix) | 42 Two (prefix) | 42 Two (prefix) | |
| 53 Ball | 43 Employ | 43 Employ | |
| 54 Ceremony | 45 Ball game | 45 Ball game | |
| 55 Shot from ambush | 50 Secreted | 50 Secreted | |
| 67 Goes to bed | 51 Far (prefix) | 51 Far (prefix) | |
| 69 Caudal appendages | 53 Ball | 53 Ball | |
| | 54 Ceremony | 54 Ceremony | |
| | 55 Shot from ambush | 55 Shot from ambush | |
| | 67 Goes to bed | 67 Goes to bed | |
| | 69 Caudal appendages | 69 Caudal appendages | |

Here's the Answer



GOOD HEALTH



Answer to Question No. 1:
Prematurity leads to more infant deaths than any other one cause. However, more premature babies are being saved, because we know more about how to care for them. Most hospitals now have incubators, and many communities have specially equipped ambulances and even airplanes to transport babies born at home prematurely to the hospital quickly. In the past fifteen years infant mortality from all causes has been cut in half in the United States.

Answer to Question No. 2:
The average human body contains about five quarts of blood. If you lose more than one of those quarts at one time, your life may be endangered. Shock from loss of blood is treated by replacement of plasma or whole blood. Under supervised conditions of a Blood Bank, donating blood is eminently safe.

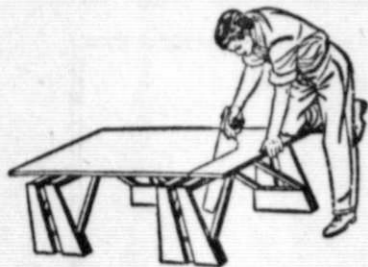
Answer to Question No. 3:
If so, do not insist on his using the right hand. Left-handedness is an inherited familial trait. Forcing a change may cause psychological problems. After the child is older, you can encourage him to use the right hand to a considerable extent. He may learn to use both hands well, but still will use the left hand for such activities as writing and baseball pitching. (Copyright 1951 by Health Information Foundation)

**Handy Jim's
FIXIN-UP TIPS
for Farm and Home**

Divided Saw Horses

A PAIR of saw horses like the ones illustrated will end sawing woes in the home workshop. Designed by a man from South Dakota and described in *Family Handyman*, the horses lend ample support even to large panels.

Each has an open center, through which either a hand or power saw may go. The stock is laid along the top



and cuts are made through at points where the saw can fit into the slots. For ripping, the open center gives ample, full-length support for both halves of the material.

When panels are unsupported during the cutting, as in using ordinary saw horses, oftentimes they will leave jagged ends caused by the material's breaking under its own weight.

Wis. to Have All-time High Birth Record

Judging from experience in the first nine months of the year, a record number of babies will be born to Wisconsin parents in 1952.

Live births may reach 90,000 by Dec. 13, exceeding by about 2,100 the previous high birth total of 1951. With 90,000 babies, the state would also have a record birth rate of 26.2 per thousand population.

Since 1947, when the birth rate soared to an all-time high of 26.1, the rate has been 24 or greater each year, and an estimated 507,800 babies have been born to Wisconsin families. The future of these children, who make up about one-seventh of our population, must now be planned for.

Total deaths, on the other hand, are expected to reach 34,000 by the end of the year. Thus, births may outnumber deaths by 1 1/2 to 1 for the fifth time in six years, swelling our population even more.

The ever-increasing number of births will be reflected by greater and greater demands on school and housing. And more babies will increase the need for physicians and teachers. Manufacturers of baby food, toys, and equipment for children, will have bigger demands, too.

Even with the record number of births in 1952, our already low maternal, infant, and fetal death rates probably will continue their decline. These rates can be reduced even further if every expectant mother seeks medical care early in pregnancy and follows the advice of her physician.

It is also important that we renew our efforts to protect children from preventable diseases, and see that they receive proper food for growth and development. This early health building is our best chance for assuring health in the older age group.



DOTS PREFERRED—Voluptuous Las Vegas lovely, Joann "Sandy" Sanders dries out her blonde limbs and polka-dot swim suit aboard a boat on Lake Mead at the Nevada resort. Sandy, earrings and all, is enjoying herself immensely, hopes to fish and swim "a lot" while in Las Vegas.

These Wardrobe Extras Add Beauty

They Add Needed Sparkle

BY EDNA MILES

TO some extent, the size of a woman's wardrobe must depend on her adeptness at sleight-of-hand with scarves, flowers, belts and jewelry. Even women who possess large wardrobes use these tricks, so they're doubly important for the woman who must get along on limited means.

The best rule to go by in choosing accessories to dress up and vary your clothes is to pick those that are simple. Avoid fussy, tricky or extreme scarves, jewelry, gloves or stoles. You'll tire of them quickly and so will everyone else.

Try, rather, to buy those shawls, capes, bags, belts, over-skirts and aprons that can survive more than one season. Try also to pick those that will serve with more than one suit, dress or blouse in your closet. This way, you're being kind to both your appearance and your budget.

With a little practice, you can learn to run up your own ties, scarves and net aprons. Examine carefully those on display in the stores. This will show you how to start. Even if you are not an expert seamstress, you can acquire a knack for these small accessories.

You can further stretch your wardrobe by learning to tie a scarf or wear a stole more than one way. Use your imagination. You'll find it richly rewarding.



Here, actress Virginia Mayo ties a satin cummerbund about her waist. She has pinned a flower-h bouquet of fake blooms to her blouse. This lends separates a dressy air.



Actress Virginia Mayo wears a tailored belt and dotted silk tie to lend a crisp appearance to her blouse and skirt. Switching accessories often lends a lot of variety to any wardrobe.

Are You Satisfied With Your Job?

Are you satisfied with your job?

People who are unhappy in their jobs not only can't do their best work but they may be headed for serious emotional disturbances that can make them ill.

Many people think that the most frequent reason for dissatisfaction on the job is pay. But there are at least two other important reasons: the lack of a feeling of belonging and the need for a feeling that the work is important.

The feeling of belonging is not easy to acquire. You have to feel you're part of your work group. And when you feel you're working within a team toward a common goal, you'll do better work, and pride and pleasure will be yours.

The feeling that your work is important involves emotional satisfaction on the job and reaches over into your leisure time conversation, social contacts, and standing in the community.

If you think of your job as worthwhile, you give it a dignity of its own no matter how unimportant it may appear to someone else. It helps, too, if the boss recognizes your accomplishments; you'll be able to take criticism later on without getting discouraged.

Expressing your attitude about the job every now and then to a friend may even be helpful.

Both feelings, if you have them, are signs of good mental health. But there are so many degrees of mental health that no one characteristic by itself is evidence of good mental health, nor the lack of any one evidence of mental illness.

And nobody has all the traits of good mental health all the time. Remember, you're normal if you have troubles.

Number of telephone employees in Minnesota has increased 51% since the last war, wage payments have increased 154%, requiring 67c of every dollar revenue.

In 10 years Northwestern Bell Telephone reports building costs up 103%, cable 108%, poles 117%, wire 130%, trucks 146%, cross-arms 152%.

Teacup Topics
by Betty Ann
EDITOR
THE MILWAUKEE JOURNAL
WOMAN'S PAGES

Men are amused at woman's endless cry, "I haven't a thing to wear." Yet that can be disquietingly true, if just one part of a costume is not in running order. So that this won't happen to you, in comfortable time before your next engagement, think out what you'll wear from head to toe. Then assemble the items—your dress or suit, hat, shoes and accessories—and inspect them in a good light, says Betty Ann.

There's a knack to pressing your flannel, hard finish or lightweight gabardine separate sports skirts—the ones you wear so happily with sweaters. They can be steam pressed on the right side of the fabric and without dampening. Although, if the seams are heavy, your press cloth is advised, particularly when the material has a tendency to shine.

As with other skirts, your woollens should be pressed from the hemline to the waist. And if you'll pull the garment taut as you press, that sat out basketlike scoop at the back of the skirt will disappear. Press the waistband flat and for complete smoothness, let the steam penetrate determined creases by holding the iron over the wrinkled area for a few seconds.

The wrong side of a bias cut skirt is the right side for steam pressing. Because of the skirt's pattern, the seams have a tendency to bulge; but they'll be as flat as a pancake if you'll turn the garment inside out before you begin its reconditioning.

The nap of suede and velvet shoes can be picked up beautifully through use of your steam iron. First, brush. Then set your iron for rayon and place it on the edge of the ironing board with the shoe about an inch away from the steam. Give scuffed places special attention and while the shoe is still damp brush with a bristle brush until the nap is restored. Over badly worn spots rub an emery board gently.

Latest useful, versatile new fabric to be announced is a thin, strong, waterproof nylon fabric film. A cast vinyl coated material, it will be made in fine knit tricot and in knitted mesh nylon construction.

Soft, lightweight, reversible and highly resistant to tearing, abrasion, splitting and cracking, it is being made in Stouting, Wis., in the newly acquired plant of a large rubber company. Currently it is being made only in white. But it will be produced in other colors soon. Both the knit tricot and the mesh can also be produced with printed effects such as marquisette or tweed, or with flowers or animals.

The nylon film is expected to be used in such products as infants' wear, crib mattress covers, rainwear, umbrellas, golf jackets and other sports clothing. A relaxed, waterproof fabric, it is completely reversible, so can be used with either side out. According to the manufacturer, it drapes easily, tailors well and will not fray when cut. It can be sewed and shirred, and stays soft and pliable at widely varying temperatures.

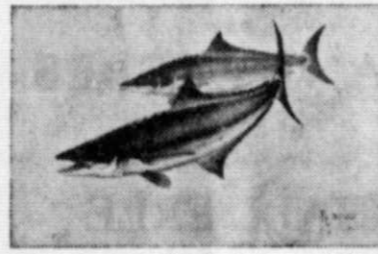
It can be washed with soap and water and ironed with a low temperature iron.

Fragile though it may look, angora is one of the easiest materials to care for. Popular this winter for stoles, berets and mitts, it can be kept soft and fluffy by simply squeezing it gently and frequently through lukewarm soapsuds, and rinsing at exactly the same temperature. Flat pieces should be returned to their original dimensions and left to dry away from heat—measure or draw an outline on paper before they are put into the soapsuds. A beret can be shipped over a round plate which approximates its original size and dried—also away from heat. Angora is easily re-fluffed by shaking it when dry.

Here are three favorite toppings for baked ham: Mix one cup brown sugar and two tablespoons flour together and pack it over the scored fat surface of the ham. Dribble one cup honey or one-half cup orange juice over the scored ham. Mix one cup brown sugar with one tablespoon prepared mustard and pack it over the scored ham. After any of these toppings are put on, the ham should be returned to a hot oven for 15 minutes or until golden brown.



HORNING IN—With a horn-spread like Paul Bunyan's big blue ox, this prize-winning highland bullock impressed spectators at the Smithfield show in London. Seen above, holding still for a careful coiffure, he is the champion of the Edinburgh faistock show.



Cobia
©1952 National Wildlife Federation

If one wishes to get into a misunderstanding about the common names of a fish it is suggested that the argument start over the Cobia. Here are a few perfectly acceptable names for this marine fish: Cabio, Sergeantfish, Black Salmon, Lemonfish, Coalfish, Crabfish, Crabbeater and Black Bonito. While the fish was listed as Cobia in the 1952 set of wildlife stamps published by the National Wildlife Federation, in the 1949 series it was figured and labeled the Sergeantfish. The scientific name *Rachycentron canadus* was the same in both cases. It was described in considerable detail in the Federation's Official Calendar for 1953.

Possibly one reason for this confusion centers around the great variation to be found in color and to some extent the variation in form in fishes of different age. The record fish taken with a line weighed 113 pounds and measured 5 feet 9 inches. An average sized Chesapeake Bay fish is around 15 pounds but many are taken weighing twice as much. The outline of the tail in young 4-inch animals is convex to the rear while in adult fishes it is concave. Cobias are usually dark to light buff or brown and show a dark stripe running from the snout to the tail base on either side. In young fish this stripe is conspicuously bordered with white. The young fish swim chiefly through the use of the large paired forward fins but this behavior changes as the fish grow older. The young have some resemblance to the remoras or shark suckers.

Cobias are taken on hook and lines using crabs and similar animals for bait. Once hooked, a Cobia puts up a gallant and vigorous battle for its freedom. Fishing is most commonly done about wrecks, reefs and similar areas most commonly in bays and harbors. They are not sufficiently abundant to be considered as commercial fish but do rank high with some as game fish. Comparatively little seems to be known about the breeding habits of the Cobia and since young fish have been taken at considerable distances from the known breeding grounds, it is plain that there are as yet unrecognized breeding grounds.

Cobias range from Cape Cod to Brazil on the Atlantic Coast of the Americas. They also are found off the coasts of South Africa, Cape Verde, Guinea, Mexico, the West Indies, Australia and Japan. Strangely enough in a fish of such a cosmopolitan nature it has not been found on the Pacific Coast in the United States. Its abundance is irregular. Sometimes it is most common in the Chesapeake Bay area where it is supposed to breed during the summer months. At other times it may appear in abundance off Mississippi on our Gulf Coast.

The flesh of Cobias is white and excellent as food and the food of Cobias may include such bottom feeders as flounders or the more open-water species such as weakfish. They are vigorous as fighters and as feeders and may shift their diet from the larger fish to crabs, shrimps and similar small animals.

—By E. Laurence Palmer

THESE WOMEN!

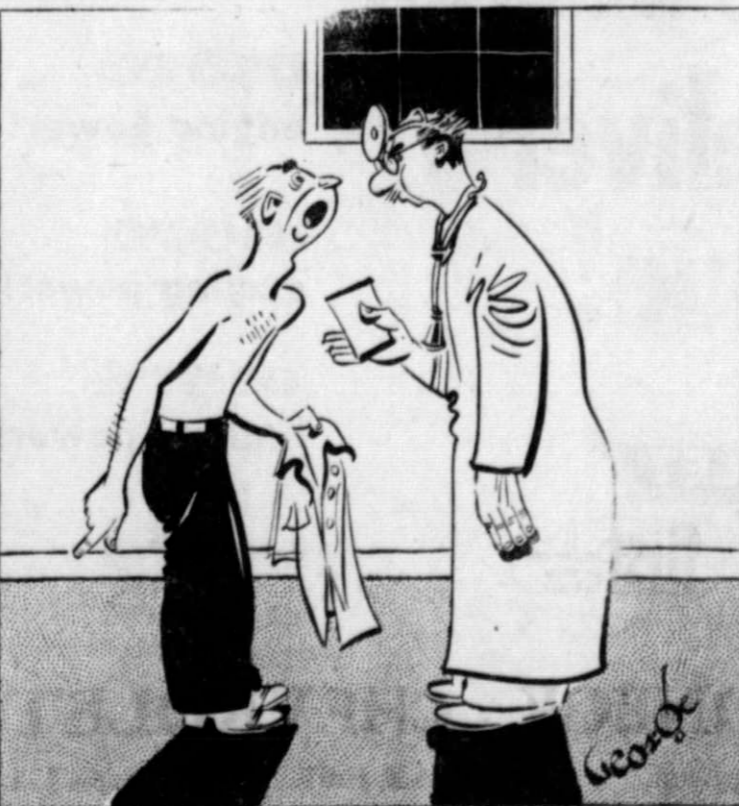
By d'Alessio



"How can anybody hoard anything with prices so high?"

Ticklers

By George



"All right Doc! I'm a practical man and can take it. How serious is it? Give it to me straight. . . . How much is my bill?"

WINTER FOLLIES



"Don't be so impatient—you're SUPPOSED to adjust your speed to conditions!"

NATIONAL SAFETY COUNCIL

Test Your Intelligence

Score yourself 10 points for each correct answer in the first six questions.

- One of the following men is not a playwright. Can you name him?
—Elmer Rice —Norman Thomas —Robert Sherwood
—Maxwell Anderson
- Coffee is ground from which of the following?
—Pollen —Berries —Roots —Leaves
- Which of these four documents was written first?
—The Bill of Rights —The Constitution
—The Declaration of Independence
—The Emancipation Proclamation
- Which of the following words does not match the other three used to describe parts of the eye?
—Iris —Retina —Fovea —Ventricle
- Thomas Jefferson's home was called —
—Monticello —Mount Vernon —The Hermitage
—Shangri-la
- Which of the following boxers won a decision over Joe Louis?
—Randy Turpin —Maxie Rosenbloom
—Max Schmeling —Sugar Ray Robinson
- Match the following canals with the bodies of water which they connect. Score yourself 10 points for each correct combination.
(A) Suez Canal —Aegean Sea and Ionian Sea
(B) Panama Canal —Red Sea and Mediterranean Sea
(C) Sault St. Marie —Pacific and Atlantic Oceans
(D) Corinth Canal —Lake Superior and Lake Huron

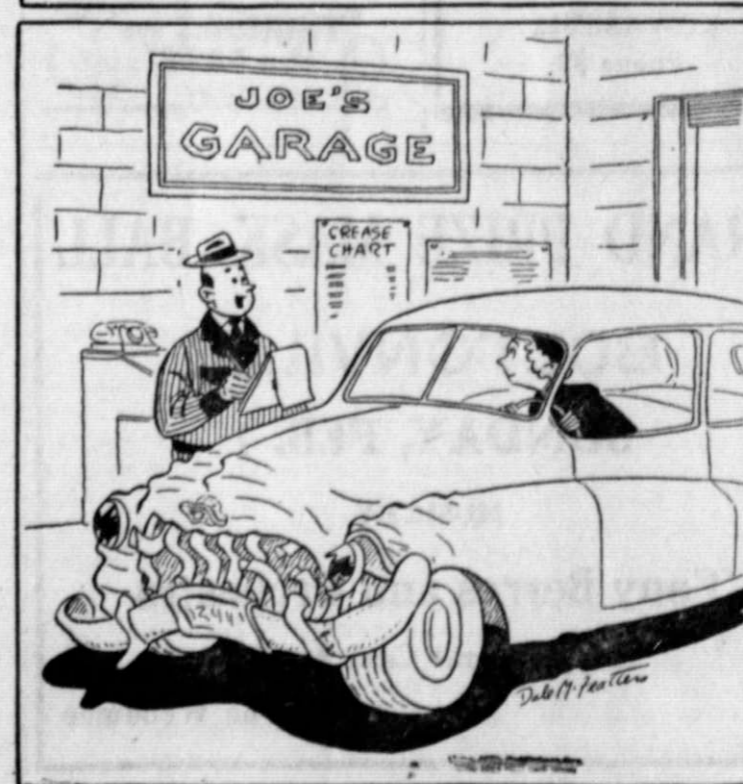
Total your points. A score of 0-20 is poor; 30-60, average; 70-80, superior; 90-100, very superior.

ANSWERS TO INTELLIGENCE TEST

- 1—Norman Thomas, 2—Berries, 3—The Declaration of Independence, 4—Ventricle, 5—Monticello, 6—Max Schmeling, 7—(A) Red Sea and Mediterranean Sea, (B) Pacific and Atlantic Oceans, (C) Suez Canal, (D) Aegean Sea and Ionian Sea.

STRICTLY BUSINESS

by McFeatters



"In appreciation of your past business, Mrs. Argyle, this one will be on the house!"

Eisenhower Urges Nation Support March of Dimes



President-elect Eisenhower meets 1953 March of Dimes Poster Girls Pamela (left) and Patricia O'Neil, of Raleigh, N. C.

NEW YORK CITY—President-elect Dwight D. Eisenhower called on the American public to support the 1953 March of Dimes being conducted throughout the nation during all of January.

He joined in the annual appeal after meeting the two Raleigh, N.C., sisters who are pictured on the 1953 March of Dimes poster. They are Patricia, 6, and five-year-old Pamela O'Neil, both of whom were stricken with polio but now are recovered completely.

"It's hard to believe that these are the same little girls whose pictures are on the March of Dimes poster," he noted. "Now they're completely recovered from polio, thanks to the generosity of the American people."

He urged all Americans "to help the others like them by joining the March of Dimes."

Later, he joined the poster girls in making a short film which is being shown by television stations throughout the nation.

This year's March of Dimes follows the all-time record polio epidemic of 1952 in which more than 55,000 were stricken. At the beginning of 1952, there were 58,000 polio victims of former years still undergoing treatment, with financial help from local March of Dimes chapters.

The Oaks gave Kewaskum a close battle there recently and Watertown there also looms as a tough assignment.

RIVERS CAGERS TO MEET JACKSON HERE SATURDAY LAND O RIVERS STANDINGS (Second Half)

	Won	Lost
MAYVILLE	FG	FT
Ixonia	1	0
Juneau	1	0
Mayville	1	0
KEWASKUM	0	0
Horicon	0	1
West Bend	0	1
Fillmore	0	1

Results last week end—Ixonia 59, West Bend 56; Juneau 67, Horicon 45; Mayville 57, Fillmore 38.

Games Sunday, Feb. 1—West Bend at Horicon, Juneau at Mayville, Fillmore at Ixonia.

Like the Lakes cagers, the Kewaskum Rivers team also was idle from league play last week end. And again this week end they have no game scheduled. But they will play a practice encounter against Jackson in a preliminary to the Kewaskum-Oakfield Lakes tilt here Saturday night starting at 7:15. Ixonia won the first half Rivers title.

Advertise in the Statesman Want Ad section.

Committees Appointed for Brotherhood Week Observance in County

Appointment of several special committees for the Washington County Brotherhood Week observance has been announced by Attorney C. J. Schloemer, West Bend, general chairman.

Schloemer said that Russell Colwell, chairman for farm groups, has named Harvey Dhein, West Bend, Frederick Schroeder, town of Trenton, and Robert Crawford, Rockfield, to work with him in coordinating Brotherhood Week activities for farm organizations.

To plan observance among labor groups, Fred Holt, chairman, has appointed Leonard Oelhafen, West Bend, and Clarence Daly, Hartford.

Assisting Heuben Schmah, Jackson area chairman, will be Rev. Calvin Franz, Germantown; Rev. Frederick Gilbert, Slinger, and Adolph Lofy, Richfield.

L. J. Goring, chairman of the West Bend area, has announced the appointment of Emil Gauger of the town of Trenton; Guido Schroeder, town of West Bend; John Van Beek

of the town of Barton, and Anthony H. Otter of the village of Barton, as members of his committee.

Brotherhood Week will be observed nationally during the week February 16 to 22. The observance is sponsored by the National Conference of Christians and Jews, whose honorary chairman is President Dwight D. Eisenhower. The National Conference was founded 25 years ago by a group of prominent Americans to encourage all people in our nation to live and work together in mutual respect and understanding.

Further appointments to local committees are now being made and will be announced shortly, according to County Chairman Schloemer.

A trapper on Horicon marsh caught a mink that had a rubber band round its neck.

Class on Food Handling and Public Health Feb. 2

A food handling and public health class will be conducted by the Wisconsin State Board of Health, Division of Hotel and Restaurant Inspection on Monday, Feb. 2, from 2 to 4 p. m. at the City Hall auditorium, Hartford.

All managers and employees of hotels, restaurants and other food handling establishments as well as hospital, church and school groups in the Washington county area are invited to attend.

The program presented by Lt. D. Kalling, field representative and inspector, and K. K. Theids, assistant supt., State Board of Health, both of the Hotel and Restaurant Division, will include lecture, discussion

and movies.

The entire program is designed to better inform all food handling groups in correct procedure of operating and food handling, food preparation and storage, refrigeration, personal hygiene, public health and prevention of food poisoning. Special instructions will be given on proper methods to be followed regarding the cleaning and sterilization of all eating and drinking utensils including cooking and preparation equipment, which regulations are mandatory in the operation of any state or city approved drinking and eating establishment.

A woodcock banded in Louisiana on Dec. 21, 1951, was shot by a hunter in Langlade county on Oct. 10, 1952. Game Manager B. H. Popov reports.

Lakes Basketball

(CONTINUED FROM PAGE ONE)

Wild, f	3	4	1
Ayres, f	3	0	3
Harvey, f	5	3	3
Schultz, c	2	2	2
Stueckmeyer, c	0	2	2
Krueger, g	0	0	1
Hartwig, g	2	1	4
Helm, g	0	3	1
	15	15	17

OAKFIELD HERE SATURDAY; CHEVS AT WATERTOWN SUN. LAND O LAKES STANDINGS (Second Half)

	Won	Lost
Mayville	1	0
West Bend	1	0
Slinger	1	0
Hartford	1	0
Oakfield	1	1
KEWASKUM	0	0
Horicon	0	0
Rosendale	0	1
Watertown	0	1
Random Lake	0	2

Results last week end—West Bend 91, Random Lake 77; Hartford 68, Rosendale 65; Oakfield 78, Random Lake 72; Mayville 68, Oakfield 59.

Game Thursday, Jan. 29—Rosendale at Random Lake.

Games Saturday, Jan. 31—Oakfield at Kewaskum, Horicon at Hartford.

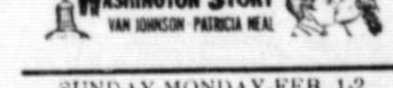
Games Sunday, Feb. 1—Kewaskum at Watertown, Hartford at Slinger, Random Lake at Mayville.

Kewaskum Theatre

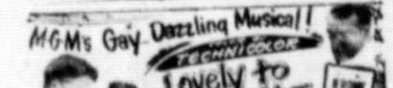
NOW PLAYING



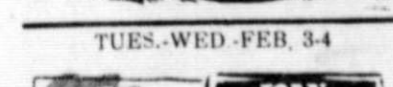
AND



SUNDAY-MONDAY-FEB. 1-2
Mat. Sun. 2:00 P. M. (Only 1 Show)
2 Shows Evening 7 and 9



TUES.-WED.-FEB. 3-4



THURSDAY-FRIDAY - SATURDAY
FEB. 5-6-7



West Bend at Horicon.

Second half competition in the Lakes circuit got underway last week end. However, Kewaskum, with the big playoff tilt Saturday night, did not play a league game. The team will resume loop action this week end with two contests. Saturday night Oakfield plays on the local floor and Sunday night the team travels to Watertown.

We buy, sell, list, and auction lake properties, farms, and small businesses. For quick cash for your property, contact the

Bartelt Real Estate Agency
KEWASKUM
Phone 34F2

THOENNES MFG. CO.

Manufacturers of
CHOPPER BOXES
ALSO
General Blacksmithing
and Repairing
We Specialize in Plow Points
Located at intersection of wys
28 and 55 6-13

A Large Variety of LIQUORS, WINES and BEER at HEISLER'S Super Bar and Liquor Store KEWASKUM Phone 89

GRAND PRIZE MASK BALL

BOLTONVILLE
SUNDAY, FEB. 1

MUSIC BY
Tony Berres and Orchestra
Many Liberal Cash Awards
The Woodmen

West Bend THEATRE

FRIDAY-SATURDAY-JAN. 30-31



SUNDAY-MONDAY-TUESDAY
FEBRUARY 1-2-3
Continuous Show Sunday 1:30 p. m.



KEWASKUM OPERA HOUSE Tavern & Ballroom SANDWICHES at all times

HALL FREE for all WEDDING DANCES

DEI'S DELICATESSEN
BAKED HAM
POTATO SALAD
ROLLS

OPEN EVENINGS AND ALL DAY SUNDAY
Complete Line of Groceries and Lunch Meats

Kewaskum Opera House Building

This advertisement is neither an offer to sell nor solicitation of offers to buy any of these bonds. The offering is made only by the Prospectus.

NEW ISSUE:

\$625,000

SETON HILL COLLEGE
(A not-for-profit Pennsylvania Corporation)
Greensburg, Pennsylvania

FIRST MORTGAGE SERIAL BONDS

Dated January 1, 1953 Due Serially

\$ 38,000 of bonds maturing Feb. 1, 1954 to Feb. 1, 1955—3%
\$ 54,000 of bonds maturing Aug. 1, 1955 to Feb. 1, 1957—3 1/4 %
\$ 73,000 of bonds maturing Aug. 1, 1957 to Aug. 1, 1959—3 1/2 %
\$113,000 of bonds maturing Feb. 1, 1960 to Feb. 1, 1963—3 3/4 %
\$347,000 of bonds maturing Aug. 1, 1963 to Feb. 1, 1968—4 %

Price: 100 and Accrued Interest

Guaranteed by the Sisters of Charity Domiciled in Greensburg, Pennsylvania. A Roman Catholic Sisterhood with 785 members.

Valuation of property including new building under construction \$5,007,597

Copies of the Prospectus may be obtained from:

B. C. ZIEGLER AND COMPANY
Security Building Telephone 148 West Bend, Wisconsin
Chicago Office—39 S. LaSalle St., Suite 1124—Phone Central 6-2522
Milwaukee Office—915 First Wisconsin National Bank Bldg.—Phone Broadway 2-4842
Minneapolis Office—607 Marquette Ave.—Phone Fillmore 1537

CLIP COUPON HERE

B. C. ZIEGLER AND COMPANY, West Bend, Wisconsin
I am interested in the new Bonds of Seton Hill College, Greensburg, Pennsylvania.
Please send me a copy of the Prospectus. I have \$.....to invest.

Name Address City

4 powerful reasons why you get more of what you want...

more engine power! 108-h.p. Loadmaster engine—standard on 5000 and 6000 Series heavy-duty and forward-control models, optional on 4000 Series heavy-duty trucks.

more staying power! Heavier, stronger, more durable frames increase rigidity, add to ruggedness and stamina of 1953 Chevrolet trucks.

more braking power! Trucks up to 4000 Series heavy-duty models have "Torque-Action" brakes. Series 4000 and above use "Torque-Action" brakes in front, "Twin-Action" in rear.

more economy! New stamina plus extra gasoline economy in heavy-duty models with Loadmaster engine, reduces hauling costs per ton mile.

1953 Chevrolet Advance-Design Trucks deliver more value!

CHEVROLET

MORE CHEVROLET TRUCKS IN USE THAN ANY OTHER MAKE!

HONECK CHEVROLET
Kewaskum, WLAD 1661 Phone 111